



Corporation to Develop
Communities of Tampa, Inc.



BUILDING STRONGER COMMUNITIES THROUGH REAL ESTATE DEVELOPMENT

*TOGETHER, WE'RE BUILDING
MORE THAN HOMES; WE'RE
BUILDING FUTURES.*

Single-Family Homes Rental Properties Commercial Properties

At CDC of Tampa, we are committed to offering a variety of residential options to meet the community's housing affordability needs. Whether it's new construction or rehabilitation, our mission is to help families and individuals embark on the journey to generational wealth through housing.

Our spacious 3-bedroom, 2-bath homes are designed with modern living in mind:

- ▶ **Granite Countertops**
- ▶ **Laminate Wood Floors**
- ▶ **Stainless Steel Appliances**
- ▶ **Tile Bathrooms**

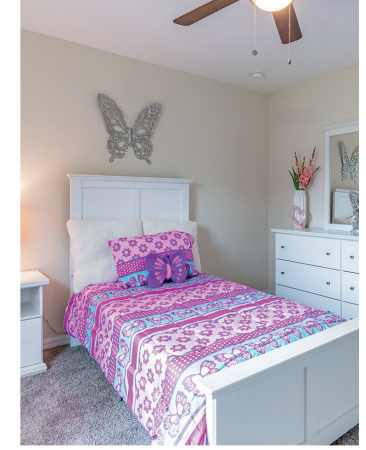
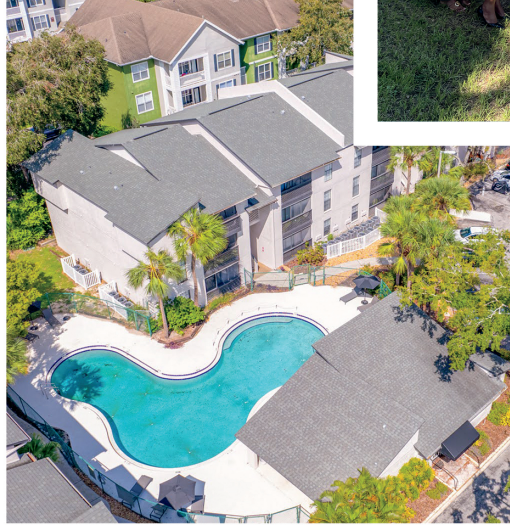
What is coming in 2025 because of your partnership:

- ▶ **Build 50 Single-Family Homes**
- ▶ **Build Five 3-D Printed Homes**
- ▶ **Diana Gardens North: 24 Townhomes**
- ▶ **Acquire 60 Lots**
- ▶ **Complete 4 Acquisiton/Rehabs**
- ▶ **East Orient: 24 Townhomes**
- ▶ **Knoll Pine: 18 Single-Family Homes**
- ▶ **Heroes Landing: 19 Single-Family Homes**
- ▶ **Veterans' Village: 16 Container Homes**



CDCofTampa.org @ f t in v
ExecAdmin@CDCofTampa.org

Chloe Coney Urban Enterprise Center
1907 E Hillsborough Ave., Tampa, FL 33610 | (813) 231-4362
Tampa Vocational Institute
2605 N 43rd St., Tampa, FL 33605 | (813) 513-7363



Thank you to our funders!



Hillsborough County Florida



BANK OF AMERICA

